

Data Overview



JSI Research and Training Institute, Inc.

1860 Blake Street, Suite 320

Denver, Colorado 80202

Phone: 303-262-4300

Fax: 303-262-4395

Email: denver@jsi.com

Presentation Overview

- Where is the data collected?
- How does the data get to the regional db?
- What happens to the data when it reaches the regional db?

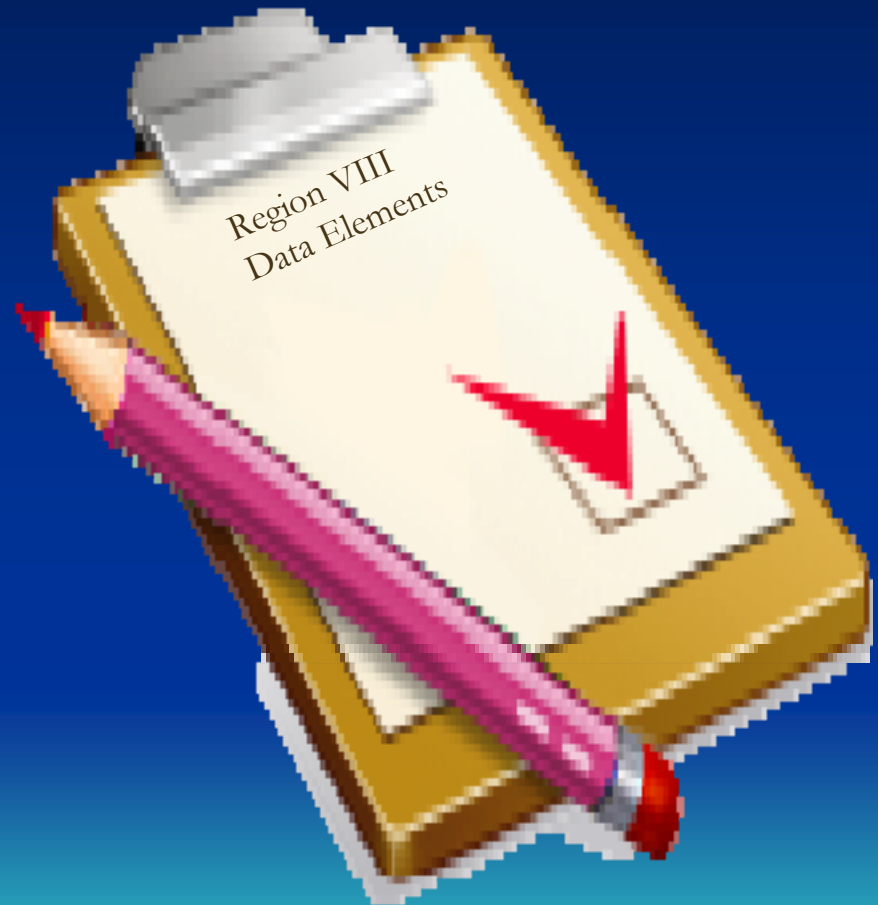
How did it all begin?



- During 1993, the Region VIII Chlamydia Project initiated a process to create a regional data system that would allow for the collection and analysis of various variables for each individual who receives a chlamydia test

How did it all begin?

- Laboratory ID
- State ID
- Agency ID
- Agency Type Code
- Gender
- Age
- Ethnicity
- Race
- Test Type
- Collection Date
- Ct Test Result
- GC Test Result
- Patient DOB
- Soundex or Last Name
- Presumptive Tx
- Risk History
- Clinical Signs
- Source
- Exam Reason
- Zipcode
- Record ID
- Control Number



Where is the data collected?

- As a region, providers who are able to provide services to targeted populations are selected to participate in the project. Providers are principally selected because they have access to high-risk and geographically diverse populations.

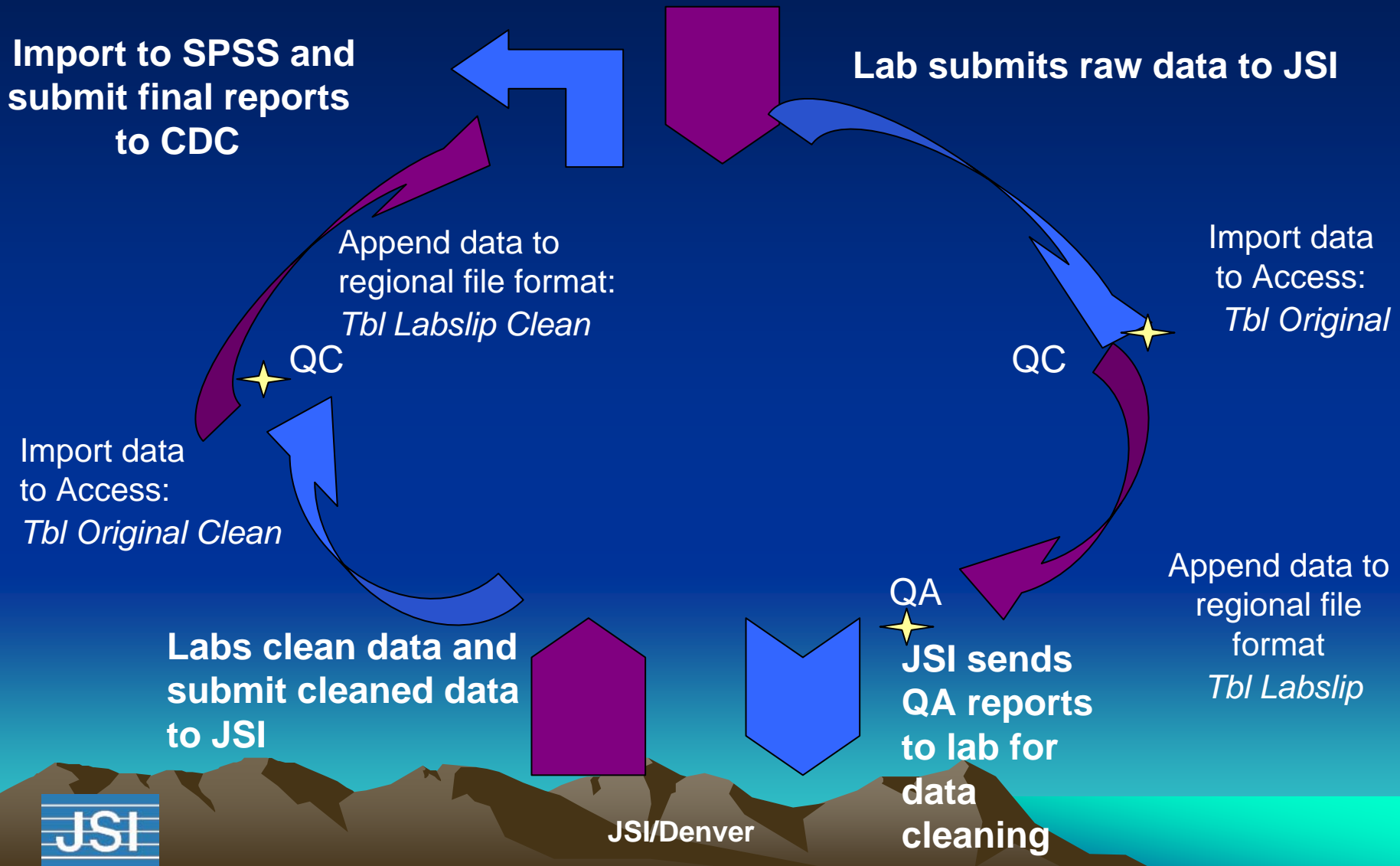


How does the data get to the regional db?

- Agency or lab staff performs data entry and exports chlamydia data to a file for transfer to JSI.
- Demographic, clinical findings and behavioral risk data collected during the medical visit are recorded on a lab slip or data collection form that accompanies the test specimen to the medical lab.

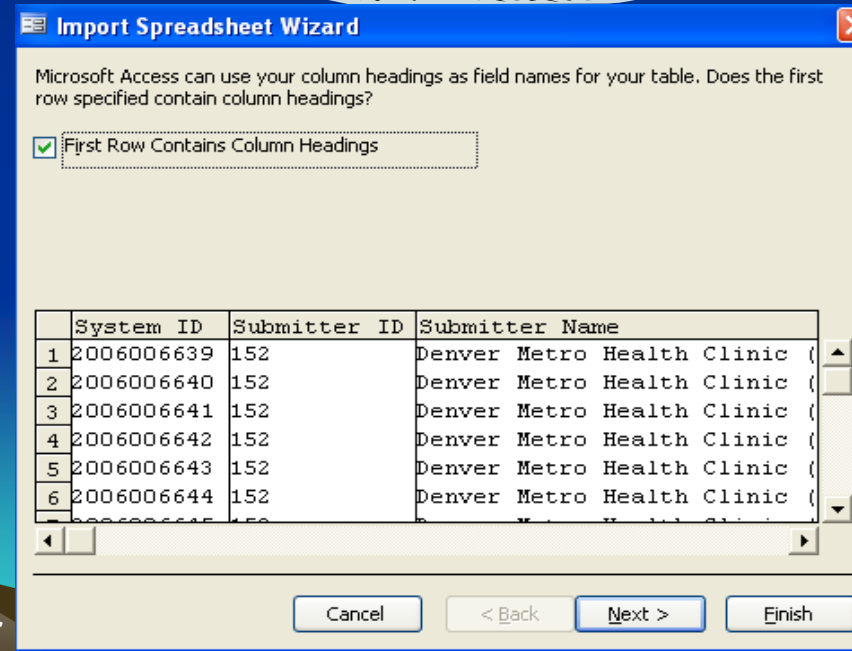


Data Process Overview



What happens to the data when it reaches the regional db?

- Data are processed and imported into Region VIII db.
- JSI reviews, cleans (ensuring that each state's data is coded uniformly according the Region VIII Data Dictionary), and merges all datasets into one regional dataset; with the regional dataset, a list of all issues or problems is generated with each lab's data submissions for the quarter.



What happens to the data when it reaches the regional db?

Overall Data Quality Policy Data QA Checklist:

	Don't import	Flag
No DOB or age	X	
No collection date	X	
No soundex or name	X	
No test results	X	
NC agency		X
Suspect age		X
Missing or invalid gender code		X

QC Cleaning : Form

QC Cleaning for ALL Labs

Find Duplicates	Check Re-codes
Lab 1	Lab 1
Lab 2	Lab 2
Lab 3	Lab 3
Lab 7	Lab 7
Lab 9	Lab 9
Lab 10	Lab 10
Lab 11 IHS	Lab 11 IHS
Lab 11 State	Lab 11 State
Lab 12	Lab 12
Lab 13	Lab 13

Record: 1 of 1

What happens to the data when it reaches the regional db?

Additionally, JSI performs the following QA check on quarterly data according to the CDC QA checklist:

- 1) Review every variable for unidentified codes, miscodes, large number of missing, large number of other and unknowns.
- 2) Create a table by state by month, and look for increases, decreases from month to month. We also look for missing data.
- 3) Compare every variable to the data sent in the previous year by quarter. We look for new codes, increases and decreases from quarter to quarter, and large number of missing age, sex, Ct test results and GC test results, race and ethnicity.
- 4) Create a Chlamydia positivity and total number of tests table by age groups (10-14, 15-19, 20-24, 25-29, 30-90) by previous and current quarters.
- 5) Create a Chlamydia positivity and total number of tests table by state by agency by previous and current quarters.
- 6) Age group by previous and current quarters for each state.
- 7) Labs by previous and current quarters for each state. Look for new labs, missing data, increases and decreases in the number of tests.
- 8) Ct test types by previous and current quarters for each state.



Keep us informed of any changes regarding:

- Test technology
- Special studies
- Screening criteria
- Programmatic issues
- Clinic changes

Next Steps

- Finished import program testing
- Making changes to database to meet new CDC standardization
- Submitting Jan-Jun 2008 data to CDC
- Transition from Old forms to New forms (data variable changes)
- Bringing on new data submitters

Next Steps

- Finalizing reporting programs
- Provide Jan-Jun 2008 reports to RAC
- Initiate calls with programs to review and discuss data